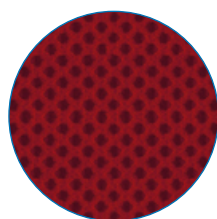




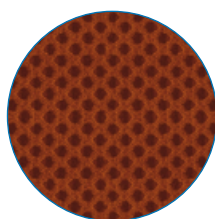
ERGOMASTER

Fabrics

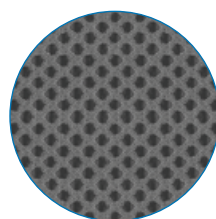
Runner



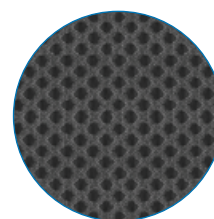
R-64089
Dark Red



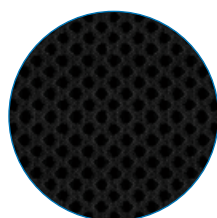
R-63034
Orange



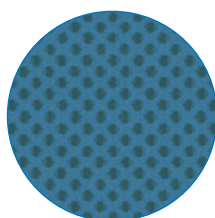
R-60011
Light Grey



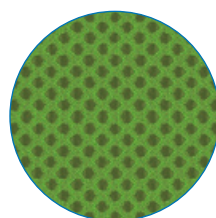
R-60025
Dark Grey



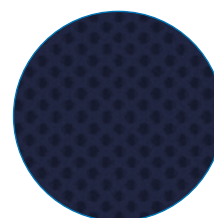
R-60999
Black



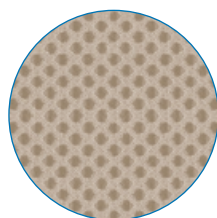
R-66063
Light Blue



R-68056
Light Green



R-66064
Navy Blue

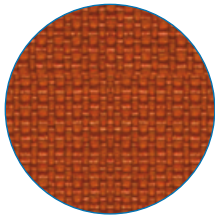


R-61128
Beige

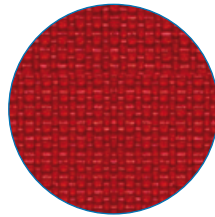
<i>Material</i>	Polyester 100%
<i>Fabric weight/lm</i>	510 g/lm (16,45 oz/lin.yd.)
<i>Abrasion resistance rubs</i>	Rubs · BS EN 14465 · EN ISO 12947-2 (Martindale) 70.000
<i>Pilling resistance</i>	Scale 1-5, max 5. EN ISO 12945-2 4-5
<i>Colour fastness to light</i>	Scale 1-8, max 8. EN ISO 105 - B02 5-7
<i>Colour fastness to rubbing</i>	Scale 1-5, max 5. EN ISO 105x12 (wet/dry) 4/5
<i>Flammability</i>	BS EN 1021-2 Match · California Bulletin CAL 117-E-Class 1 CA TB 117-2013 · BS EN 1021-1 cigarette Class Uno UNI 9175 Class 1 EMNE · BS EN 1021-1 cigarette



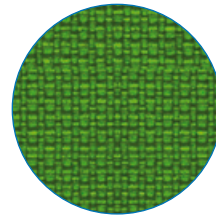
Nemo



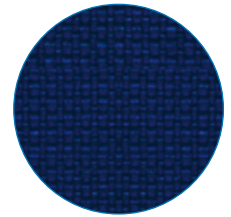
NE-3
Orange



NE-5
Red



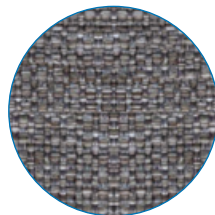
NE-9
Light Green



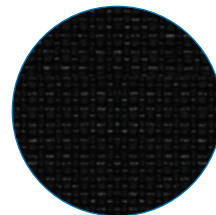
NE-15
Navy Blue



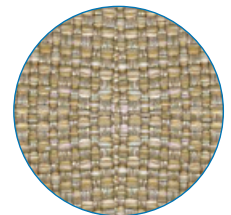
NE-14
Dark Grey



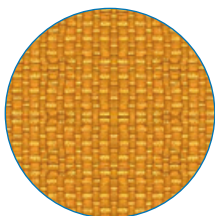
NE-10
Light Grey



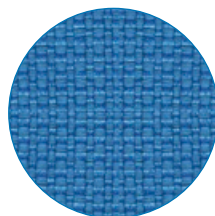
NE-16
Black



NE-1
Beige



NE-2
Yellow



NE-17
Light Blue

<i>Material</i>	<i>Polyester 100%</i>
<i>Fabric weight</i>	<i>366 g/m²</i>
<i>Abrasion resistance rubs</i>	<i>PN-EN ISO 12947 - 2:2 100.000</i>
<i>Pilling resistance</i>	<i>Scale 1-8, max 8. PN-EN ISO 105 - B02:2013 3-4</i>
<i>Colour fastness to light</i>	<i>Scale 1-5, max 5. EN ISO 105x12 (wet/dry) 4/5</i>
<i>Colour fastness to rubbing</i>	<i>Scale 1-5, max 5. PN-EN 1021 - 2:2007, PN-EN 1021 - 1:2007</i>